

# Swindon Town Football Club



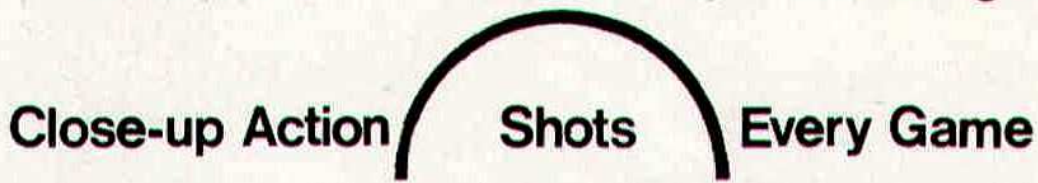
Official Programme 5np 1/-



**Swindon Town v. Portsmouth**



Complete Comprehensive Coverage



At home or away

**The Evening Advertiser**  
has it covered

# ***McILROYS***

**FULLY LICENSED  
RESTAURANT**

**FOR THE BEST-VALUE LUNCH IN TOWN  
OPEN ALL DAY SATURDAY**

*MORNING COFFEE  
LUNCHEON  
AFTERNOON TEA  
SILVER-GRILL SERVICE*

Private room for meetings, private luncheons and dinners, celebrations

McILROYS · REGENT STREET · SWINDON 5294

# Swindon Town Football Company Limited

Registered Office County Ground, Swindon

President W J Castle

Vice-President J Davies

## Directors

Chairman H E Lane

Vice-Chairman R Fricker

F L Collings A W Done M Earle C J Green

F Plyer H Williams K H Wilmer and Dr J Nicholas

General Manager R A Morse

Secretary R J Jefferies

Team Manager F Ford

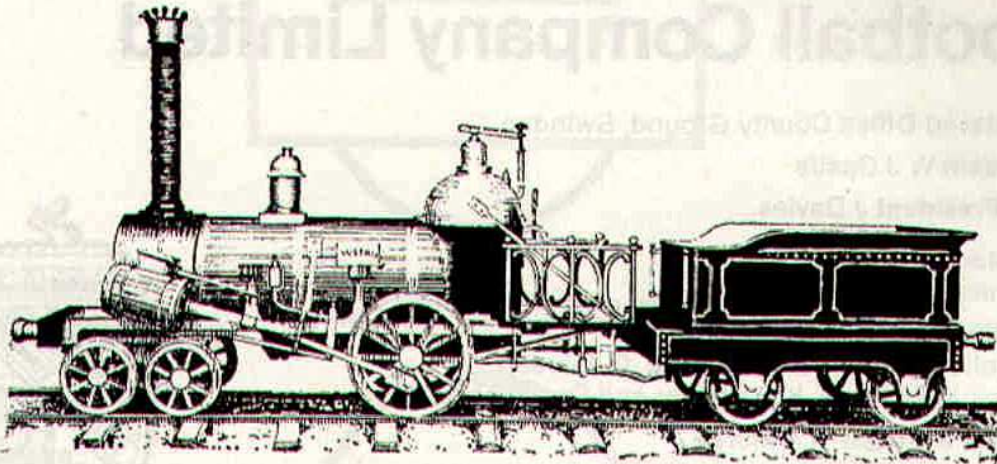


Saturday, 12th September, 1970 – Division II

## Swindon Town v. Portsmouth

Kick-off 3 p.m.

Swindon Town	OFFICIALS	Portsmouth
1 Downsborough	<b>REFEREE</b>	1 Milkins
2 Thomas	Mr G C Kew	2 Smith
3 Trollope	Leeds	3 Ley
4 Butler		4 Piper
5 Burrows		5 Blant
6 Harland		6 Munks
7 Smith	<b>LINESMEN</b>	7 McCann
8 Gough	<b>Red Flag:</b>	8 Storrie
9 Horsfield	Mr R N Parkin	9 Hiron
10 Noble	Stafford	10 Bromley
11 Rogers		11 Jennings
12	<b>Yellow Flag:</b>	12 Youlden
Colours:	Mr B Marchant	Colours:
Red and White	Hereford	Blue



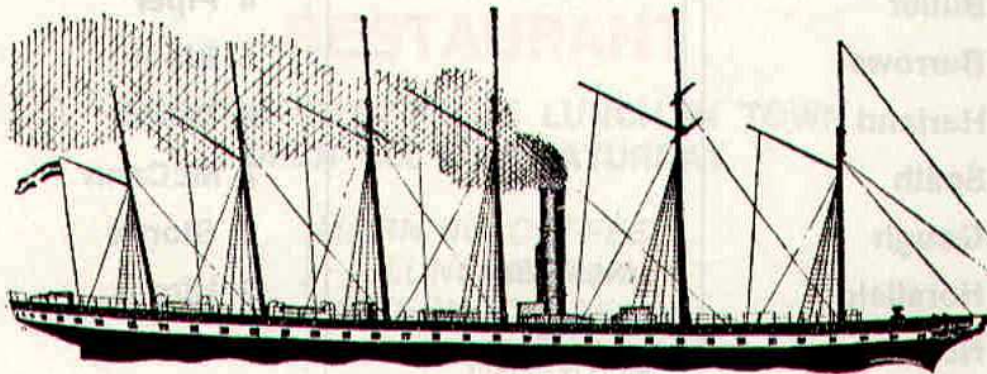
**MADE IN 1843!**

the year that ARKELL'S BREWERY and Swindon's  
G.W.R. Works were founded.

# ARKELLS THE LOCAL BREW!

Time honoured by 127 years.

*GOOD HONEST BEER  
IN  
DELIGHTFUL LICENSED HOUSES*



*"S.S. GREAT BRITAIN"*

built at Bristol in 1843. Designed by the younger Brunel, she was  
the first large vessel to be built of iron and the first screw  
steamship to cross the Atlantic. Her speed was about 12 knots.

# news & views

"Proud Pompey". What a great club with a fine tradition. Many of us still remember their wonderful days in Division 1, champions in successive seasons 1948/49 and 1949/50; and also Jack Tinn (what a legend with his famous spats he once lent to Louis Page, then Manager of Swindon Town). Many grand encounters have we had with them right back to the old Southern League days.

Today, in this changing world, the situation is somewhat different, although Portsmouth has made a great start to the season and to date occupy second position in Division 2 League table.

Portsmouth was the first club to adopt the system of dispensing with a Reserve team and functioning on a pool of 17 or 18 players. This policy seems to have been quite successful, as they now appear to be one of the strongest teams in the League.

They also believe in loyalty, and recognising service of their players. Almost every person on the staff is an ex-Pompey player.

Team manager, Ron Tindall; Chief scout, Tony Barton; Trainer, Gordon Neave; Assistant trainer, Bobby Campbell; Groundsman, Duggie Reid; Maintenance man, John McClelland; and, finally, that doyen of all Portsmouth players, a man who made 764 League appearances and played for England 48 times, Secretary Jimmy Dickenson.

Portsmouth has a wonderful ground at Fratton Park, wonderfully equipped and capable of holding 46,000 spectators with 7,200 of them seated.

Last season Portsmouth defeated Swindon 1—3 early in October

1969. The return game was played on Tuesday, 3rd March, 1970, following our defeat in the F.A. Cup by Leeds United. We were in seventh position with a possibility of promotion, so every game was important and almost like a cup-tie. This one was no exception. It was a fast and robust game — plenty of excitement with thrills, shots and great saves, especially by visiting goalkeeper Milkins. Roger Smart especially seemed to suffer from the goalkeeper's great ability, and was most unfortunate not to score.

I don't suppose skipper Stan Harland will wish to be reminded of the Pompey game, because he badly sprained his ankle in the thirty-fifth minute and had to leave the field for Chris Jones to come on as substitute. Unfortunately the injury ended Stan's long run of appearances, and caused him to miss many vital games.

Swindon: Downsborough; Thomas, Trollope; Butler, Burrows, Harland; Smith, Smart, Horsfield, Noble, Rogers. Sub. Jones.

Portsmouth: Milkins; Hand, Ley; Davidson, Youlden, Harris; McCann, Storrie, Hiron, Trebilcock, Jennings. Scorers: Swindon: Noble (9 mins), Jones (53 mins), Rogers (85 mins). Portsmouth: Hiron (10mins).

Attendance: 19,497.

Referee: Mr. C. J. Robinson

Our Reserves fell from grace very badly last Saturday, losing at home 2—5 to Oxford United. The team was unfortunately weakened by injuries and calls of the first team but it certainly surprised most of our supporters because it seemed from previous results that the team was a strong one which played attractive football.

# THE GREAT WESTERN HOTEL

(OPPOSITE SWINDON RAILWAY STATION)

The business man's hotel with a top class  
steak bar too!

Specialists in  
LUNCHEONS and DINNERS  
WEDDING PARTIES and RECEPTIONS  
good food — quick service

**J. ARKELL and SONS LIMITED Telephone SWINDON 22047**

## Mills and Merricks Limited

16-17 Bridge Street Swindon

Telephone 5365/6

**"HOME OR AWAY"**

our function is to ensure that your home is  
tastefully and economically furnished

SWINDON'S COMPLETE HOUSE FURNISHERS

### **New City Office Supplies Limited**

Office and Stationery Suppliers  
to Industry and Commerce

6 Commercial Road Swindon  
Telephone Swindon (STD Code 0793) 4605



## CLARK BROS. (Swindon) LTD

Building and Civil Engineering Contractors

CONSULT US FOR  
BUILDING AND CIVIL ENGINEERING  
CONSTRUCTION IN ALL ITS PHASES

**STRATTON ROAD**

**SWINDON**

Telephone Swindon 27261

## Personality Spot ...

### Frank Burrows



A handwritten signature of Frank Burrows in cursive script, written in black ink on a light background.

Born Larkhall, Scotland. Joined the Club from Scunthorpe United for whom he played 3 seasons. Formerly with Raith Rovers, with whom he spent 4 years. Regular member of promotion winning side of season 1968/69. Played in the Football League Cup Final winning team of season 1968/69, the League Cup Winners Cup winning team of 1969 and the Anglo-Italian Inter-Club Competition winning team season 1969/70. Frank is married and he and his wife Mary have one son, Derek. He has made 110 League and Cup appearances for the Club. Hobbies: Golf, reading and driving. Height: 6ft 1½ in. Weight: 12st 8lb.

## *G. A. Streetly*

Tobacconist and Confectioner

**10 BOURNE ROAD  
MOREDON SWINDON  
Telephone 4956**

## **C. Goodenough and Sons**

**Removal and Storage Contractors**  
any distance

**25 Cricklade Street Swindon  
Telephone 4555 and 3855**

## *CECIL GREEN*

Artistic Decorations in all its branches

**12 Armstrong Street  
Swindon Wilts  
Telephone 4593**

## *W. J. SELWOOD*

Telephone Swindon 5884

### **Saddlery**

General Leather Goods Manufactured and  
Repaired to Your Individual Requirements

**103 BROAD STREET  
SWINDON WILTSHIRE**

## *Notton's Cafe*

### **COUNTY ROAD**

Cliff and Grace Hayward  
200 yards from Ground

**Snack and Grill Service  
all day**

For High Class  
Central Heating, Plumbing  
Painting and Decorating  
Electrical Installations  
and Repairs

### **NORTH WILTS Sanitary and Heating Co. Ltd.**

**NEWPORT STREET SWINDON  
Telephone 5373/4**



THE ALCOHOL FUEL

### **COATE GARAGE**

**REPAIRS - OVERHAULS - WELDING  
SERVICING - REBORING - TYRES**

Props. E. V. & W. H. Maltick  
Marlborough Road Swindon

## **Leese, Ing & Co. Ltd.**

Mineral Water and  
Squash Manufacturers

**LANSDOWN ROAD SWINDON  
Telephone 22744**

## *Maylott Studios*

**For Group and Sports Photographs**

Official Photographer to  
Swindon Town Football Club

**31 Faringdon Road  
Telephone 22792**

Always at your service

## *L. Bibby*

For all Types — Rags, Iron and Metal, etc.  
Spot Cash Paid. Please Telephone 2101  
and our van will call.

**THE PADDOCK ERMIN STREET  
STRATTON ST. MARGARET**



# our visitors

## Portsmouth



### John Milkins

Height: 6ft 0½in. Weight: 13st 3½lb. Born: Dagenham, Essex. League appearances: Portsmouth 238, debut season 1960/61. Hobbies: Golf, darts, cricket and motoring. Dagenham born, John joined Portsmouth on 15th May, 1961, as a professional and since gaining his first-team place he has been a consistent and competent 'keeper. John has a quiet and likeable personality and is popular with both players and supporters alike.

### Tom Youlden

Height: 6ft 0½in. Weight: 12st 9lb. Born: London. League appearances: Portsmouth 43, debut season 1968/69. Hobbies: Cricket and golf. Big and strong, Tom joined Portsmouth from Arsenal on a "free" transfer. He has, however, settled down as a centre-half. Very quick for a big boy, he enjoys his football immensely. Most of his spare time is spent studying. Recently married, London-born Tom joined Pompey on 1st May, 1967.

### Mike Travers

Height: 5ft 9½in. Weight: 11st 2lb. Born: Blackwater, Berkshire. League appearances and goals: Reading 153, 33 goals, debut season 1960/61; Portsmouth 63, 5 goals. Hobbies: Tennis, cricket and golf. A utility player, Mike has played in the defence, as a midfield man and as a striker for Portsmouth most effectively. Now in his third season with the club, he signed in July 1967. A useful cricketer for his local side, and an ex-Reading player.

### Fred Smith

Height: 5ft 6in. Weight: 9st 9lb. Born: Sleekburn. League appearances and goals: Burnley 81, 1 goal, debut season 1963/64. Signed during the close season from Burnley, his only club. Experienced in First Division football and can be described as a sharp and willing full-back. Married with a family, Fred has fitted in well at Portsmouth.

### Harry Harris

Height: 5ft 9½in. Weight: 12st 3lb. Born: Magor, South Wales. League appearances and goals: Newport 157, 56 goals, debut season 1954/55; Portsmouth 377, 48 goals. Hobby: Cricket. Now in his eleventh season at Fratton Park. He joined Pompey on 14th July, 1958, from Newport County. Originally an inside-forward, Harry played for a few seasons in that position but was successfully converted into a wing-half, where he has given stalwart service. Strong, he never gives in and is of great encouragement to the younger members of the side. Married with three children.

### Norman Piper

Height: 5ft 6½in. Weight: 9st. Born: North Tawton. League appearances and goals: Plymouth 172, 29 goals, debut season 1964/65. An Under-23 international, Norman was another close season signing, from Plymouth for a fee in the region of £40,000. An excellent player who has a tremendous amount of ability, and, although small of stature, he does an excellent midfield job. Norman married a Plymouth girl during the close season. He made his debut with Plymouth when just seventeen years of age and has a great deal of experience for one still so young.

### Ray Pointer (Team Captain)

Height: 5ft 9½in. Weight: 10st 10½lb. Born: Cramlington, County Durham. League appearances and goals: Burnley 222, 188 goals, debut season 1957/58; Bury 19, 17 goals; Coventry 26, 13 goals; Portsmouth 121, 26 goals. Hobbies: Cricket and watching television. English international, Ray joined Portsmouth from Coventry on 24th January, 1967. A prolific goalscorer with Burnley, Bury and Coventry, he has settled down in a midfield position. Ray was appointed club captain last season. Quiet and unassuming he is a well-liked personality. A player who always gives his all no matter what the circumstances.

# CARTER BROS. OF SWINDON

Car Radio  
Specialists

AND NORTH WILTS RENTALS

Hi-Fi Sales  
and Service

FOR THE FINEST IN TELEVISION  
To purchase or for rental

Personal and courteous attention : The finest after sales service in Town  
One of the few really Private Firms **Staunch supporters of the Town**  
18 Lagos Street Swindon Telephone 6640 or 23270

## THE PORK SHOP

(Swindon Bacon Curing Co. Ltd.)

Specialists in

**Bacon - Pork - Cooked Ham**

50 FLEET STREET SWINDON

Telephone 22122

## J. WILMER

Coal Merchants

St. Margaret's Road Swindon

Telephone 22535

## SOUTHERN LAUNDRY CO. LTD.

Launderers and Dry Cleaners

HAYDON STREET SWINDON

Telephone 4161

At Your Service

## A. E. LUDLOW LIMITED

Wholesale Fruit and Potato Merchant

COLBOURNE STREET  
SWINDON WILTSHIRE  
Telephone Swindon 3583

We deliver Fresh Fruit, Vegetables  
and Potatoes daily—**Wholesale Only**

## BRETTS

PET and GARDEN SUPPLIES

32-33 Commercial Road  
and

6 Cromwell Street Swindon

For Paints of Good Quality

*H. S. Hodges & Sons*

(SWINDON) LTD.

Cricklade Road Swindon  
Telephone 22422

Dulux, Brolac, Valspar, Wallcharm, etc.

## Borough Press Swindon Limited

Eastcott Hill Swindon telephone 4022

*Printers to successful industry*

## **our visitors** *continued*

### **George Ley**

Height: 5ft 9in. Weight: 12st 1lb. Born: Exeter. League appearances and goals: Exeter 94, 7 goals, debut season 1963/64; Portsmouth 111, 4 goals. Devon-born George joined Portsmouth on 1st May, 1967. An ex-winger who has been converted to full-back with one of the best left feet in the Football League. Very quick, he loves to go forward for strikes at goal. Married with one child, George is a useful badminton player, and enjoys golf.

### **Eoin Hand**

Height: 6ft. Weight: 13st. Born: Dublin, Eire. League appearances and goals: Portsmouth 67, 1 goal, debut season (English League Football) 1968/69. Hobbies: Golf, cinema, crosswords and Gaelic football. Came from Drumcondra on 14th October, 1968. Played for the League of Ireland against the Scottish League and did well. Always gives one hundred per cent both at centre-half and full-back, where he has played since joining the club. Married last year, and naturally known to his colleagues as "Paddy".

### **Ray Hiron**

Height: 6ft 1½in. Weight: 11st 2¼lb. Born: Gosport, Hampshire. League appearances and goals: Portsmouth 194, 71 goals, debut season 1964/65. Hobbies: Cricket, golf and darts. A local lad who has proved to be an excellent signing. Ray, who is 6ft-plus tall, is known as "Charlie Brown" because of his lean physique. He has been top scorer for the last two seasons. Can be brilliant on the ball.

### **Colin Blant**

Height: 6ft 1½in. Weight: 13st 4lb. Born: Rawtenstall. League appearances and goals: Burnley 45, 7 goals, debut season 1966/67. A big, strong player, Colin signed at the same time as Fred Smith. He, like Fred, has had First Division experience. Still only twenty-three years old, Pompey fans can look forward to a long association with this back defender who has also played up front for Burnley.

### **Jim Storrie**

Height: 5ft 10in. Weight: 11st 7lb. Born: Kirkintilloch. League appearances and goals: Airdrie 89, 48 goals, debut season 1957/58; Leeds 122, 58 goals; Aberdeen 13, 2 goals; Rotherham 61, 17 goals; Portsmouth 18, 10 goals. Joined Pompey last season and proved his worth with ten goals in eighteen games. A cheerful Scot who bubbles all the time, Jim has had enormous experience with Leeds, Aberdeen and Rotherham. A great admirer of Frank Sinatra, he is no mean singer himself.

### **Mike Trebilcock**

Height: 5ft 8in. Weight: 10st 11½lb. Born: Gunnislake, Cornwall. League appearances and goals: Plymouth 50, 16 goals, debut season 1962/63; Everton 41, 16 goals; Portsmouth 52, 16 goals. Previously with Plymouth and Everton with whom he won a Cup-winners' medal. A striker with two good feet he has never held a regular place with Portsmouth but has scored when brought into the side. Likes cricket and pop music. Drives a Triumph 1300 and is married with two children.

### **Nick Jennings**

Height: 5ft 5¾in. Weight 9st 12lb. Born: Wellington, Somerset. League appearances and goals: Plymouth 98, 10 goals, debut season 1963/64; Portsmouth 118, 27 goals. Hobbies: Most sports and reading. Nick has won the admiration of the fans through his willingness to run and fight for the ball. Notched eleven goals for the club last season.

### **Albert McCann**

Height: 5ft 6in. Weight: 11st 7½lb. Born: Maidenhead, Berkshire. League appearances and goals: Luton 6, debut season 1959/60; Coventry 22, 3 goals; Portsmouth 267, 76 goals. Hobbies: Most sports and gardening. After being at Luton and Coventry for short periods, Albert has settled down at Fratton Park and is now in his ninth season with Portsmouth. Always amongst the goals, he can be relied upon to do a good job in midfield if required.

# Fixture list 1970/71

## DIVISION II

### August

15 Hull City	(H)	1—1
19 League Cup (1)		
22 Sheffield United	(A)	1—2
29 Sunderland	(H)	2—0

### September

1 Watford	(H)	1—1
5 Blackburn Rovers	(A)	0—1
8 League Cup (2) Watford	(H)	4—2
12 Portsmouth	(H)	
19 Carlisle United	(A)	
26 Luton Town	(H)	
29 Millwall	(H)	

### October

3 Charlton Athletic	(A)	
7 League Cup (3)		
10 Queen's Park Rangers	(H)	
16 Hull City	(A)	
21 Norwich City	(A)	
24 Middlesbrough	(H)	
28 League Cup (4)		
31 Birmingham City	(A)	

### November

7 Bristol City	(H)	
14 Leicester City	(A)	
18 League Cup (5)		
21 Oxford United (1)	(A)	
28 Sheffield Wednesday	(H)	

### December

5 Bolton Wanderers	(A)	
9 League Cup Semi-Final		
12 Orient (2)	(H)	
16 League Cup Semi-Final		
19 Sheffield United	(H)	
26 Cardiff City	(A)	

### 1971

#### January

2 F.A. Cup (3)		
9 Millwall	(A)	
16 Norwich City -	(H)	
23 F.A. Cup (4)		
30 Sheffield Wednesday	(A)	

#### February

6 Bolton Wanderers	(H)	
13 Orient (5)	(A)	
20 Oxford United	(H)	
27 Birmingham City	(H)	
(League Cup Final)		

#### March

6 Middlesbrough (6)	(A)	
13 Leicester City	(H)	
20 Bristol City	(A)	
27 Blackburn Rovers (S.F.)	(H)	

#### April

3 Sunderland	(A)	
9		
10 Cardiff City	(H)	
12 Portsmouth	(A)	
13 Charlton Athletic	(H)	
17 Queen's Park Rangers	(A)	
24 Carlisle United	(H)	
28 Watford	(A)	

#### May

1 Luton Town	(A)	
8 F.A. Cup Final		

## FOOTBALL COMBINATION

### August

15 Crystal Palace	(A)	2—3
19 Norwich City	(A)	2—1
22 Bournemouth & B.A.	(H)	3—0
25 Chelsea	(H)	3—0
29 Ipswich Town	(A)	1—1

### September

5 Oxford United	(H)	2—5
12 Queen's Park Rangers	(A)	
15 Cardiff City	(H)	
19 Bristol Rovers	(H)	
26 West Ham United	(A)	

### October

3 Crystal Palace	(H)	
6 Swansea City	(H)	
10 Arsenal	(A)	
14 Fulham	(A)	
17 Queen's Park Rangers	(H)	
24 Gillingham	(A)	
31 Birmingham City	(H)	

### November

7 Bristol City	(A)	
14 Leicester City	(H)	
21 Fulham	(H)	
28 Tottenham Hotspur	(A)	

### December

5 Plymouth Argyle	(H)	
19 Bournemouth & B.A.	(A)	
26 Reading	(H)	

### 1971

#### January

9 Norwich City	(H)	
16 Chelsea	(A)	
23 Southampton	(A)	
30 Tottenham Hotspur	(H)	

#### February

6 Plymouth Argyle	(A)	
13 Southampton	(H)	
24 Cardiff City	(A)	
27 Birmingham City	(A)	

#### March

6 Gillingham	(H)	
13 Leicester City	(A)	
20 Bristol City	(H)	
31 Oxford United	(A)	

#### April

3 Ipswich Town	(H)	
7 Reading	(A)	
17 Arsenal	(H)	
20 Swansea City	(A)	
24 Bristol Rovers	(A)	

#### May

1 West Ham United	(H)	
-------------------	-----	--

Copyright of The Football League Ltd. and not to be reproduced without permission.

# League table division 2

(up to and including Saturday, 5th September)

	P	W	D	L	Goals		Pts.
					F	A	
Cardiff City ...	6	3	2	1	8	5	8
Portsmouth ...	5	2	3	0	8	2	7
Hull City ...	5	3	1	1	5	4	7
Oxford United ...	5	3	1	1	6	6	7
Luton Town ...	5	2	2	1	8	5	6
Norwich City ...	5	2	2	1	4	3	6
Bolton Wanderers	6	2	2	2	9	11	6
Bristol City ...	5	2	2	1	9	11	6
Leicester City ...	5	2	1	2	9	5	5
Birmingham City	5	2	1	2	6	5	5
Sunderland ...	5	2	1	2	11	10	5
Watford ...	5	1	3	1	8	8	5
Carlisle United ...	5	2	1	2	7	7	5
Sheffield Wed. ...	7	1	3	3	6	9	5
Orient ...	5	1	3	1	4	4	5
Millwall ...	5	1	2	2	6	6	4
Swindon Town ...	5	1	2	2	5	5	4
Queen's Park R.	5	1	2	2	7	8	4
Sheffield United	5	1	2	2	7	9	4
Middlesbrough ...	5	2	0	3	3	5	4
Blackburn Rovers	5	1	2	2	3	5	4
Charlton Athletic	5	0	2	3	2	8	2

## Flashback 1952-53

Saturday, 13th September, 1952

Swindon Town 3, Aldershot 2  
(half-time 0—0).

Scorers: Swindon: Owen, Millar, Ryder. Aldershot: Stewart (2).

Attendance: 10,410.

Swindon Town: Uprichard; Hunt, Radford; Kaye, Hudson, Cryle; Lunn, Betteridge, Owen, Ryder, Millar.

Aldershot: Houston; Jefferson (S.), Jefferson (A.); Reddie, White, Cropley; Hobbs, Menzies, Mortimer, Stewart, Flint.

Referee: Mr. J. B. Jackson  
(Watford).

## Flashback 1963-64

Saturday, 14th September, 1963

Leeds United 0, Swindon Town 0.

Leeds United: Sprake; Reaney, Hair; Bremner, Charlton, Hunter; Giles, Weston, Storrie, Collins, Johanneson.

Swindon Town: Turner; Dawson, Trollope; Morgan, McPherson, Woodruff; Summerbee, Hunt, Smith (J.), Smart, Rogers.

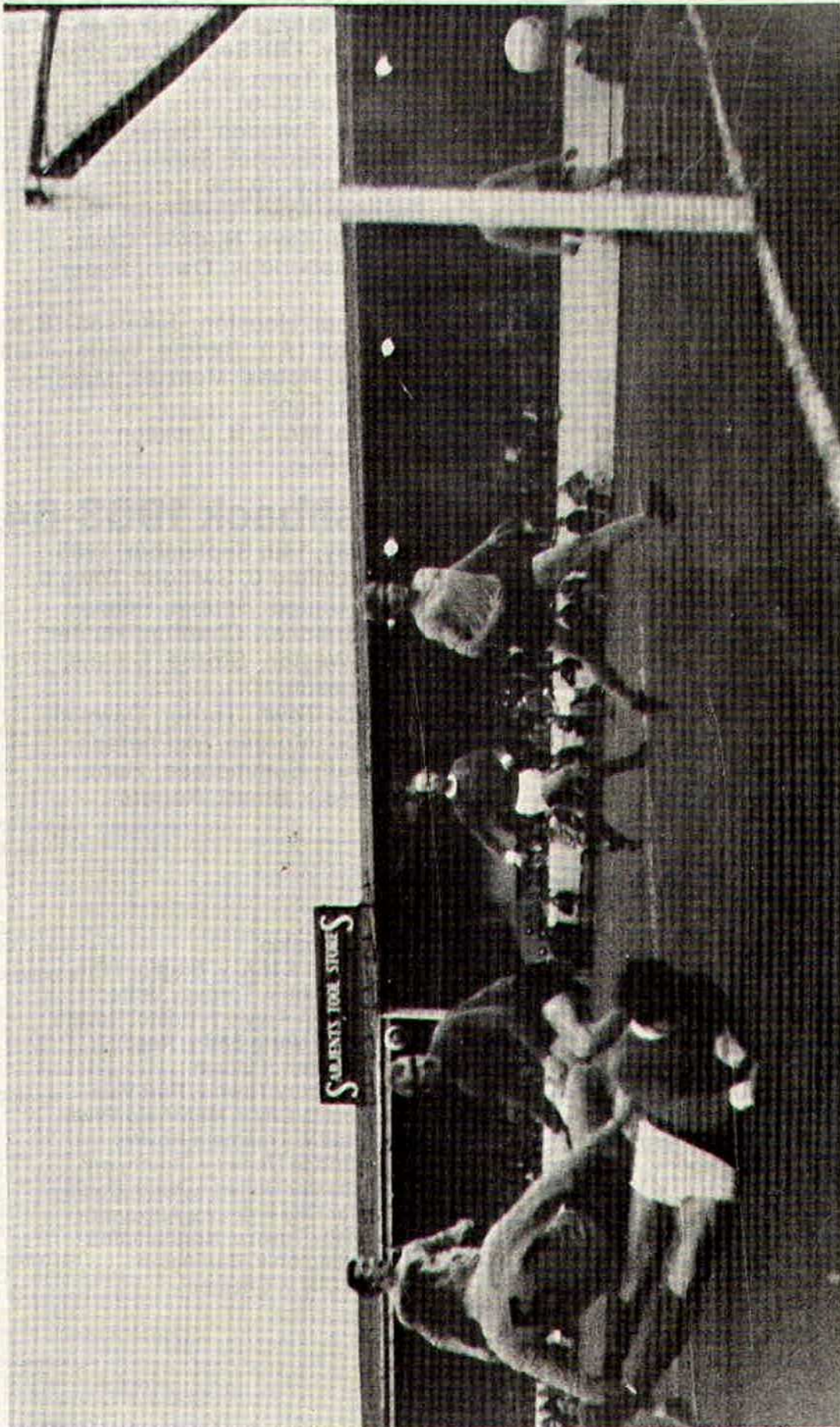
## Key of the board

### First Section

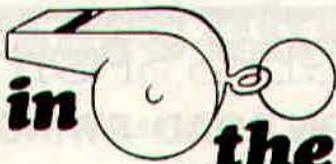
A-Burnley v. Arsenal  
B-Chelsea v. Wolverhampton W.  
C-Everton v. Ipswich Town  
D-Huddersfield Town v. Crystal Palace  
E-Manchester United v. Coventry City  
F-Newcastle United v. Liverpool  
G-Nottingham Forest v. Manchester City  
H-Southampton v. Derby County  
I-Tottenham Hotspur v. Blackpool  
J-West Bromwich A. v. West Ham  
K-Birmingham City v. Oxford United  
L-Bolton Wanderers v. Cardiff City  
M-Bristol City v. Hull City  
N-Leicester City v. Luton Town  
O-Middlesbrough v. Blackburn Rovers  
P-Millwall v. Sheffield United  
Q-Norwich City v. Charlton Athletic  
R-Orient v. Sunderland  
S-Sheffield Wednesday v. Q.P.R.  
T-Watford v. Carlisle United

### Second Section

A-Brighton & H.A. v. Bradford City  
B-Gillingham v. Torquay United  
C-Plymouth Argyle v. Bristol Rovers  
D-Preston North End v. Reading  
E-Rochdale v. Fulham  
F-Shrewsbury Town v. Port Vale  
G-Swansea City v. Mansfield Town  
H-Walsall v. Tranmere Rovers  
I-Cambridge United v. Southport  
J-Colchester United v. Notts County  
K-Exeter City v. Crewe Alexandra  
L-Grimsby Town v. Northampton  
M-Workington v. Darlington  
N-York City v. Chester



A spectacular diving header by Arthur Horsfield gave Swindon their second goal against Watford.

**the man in  the middle**

**Gordon Kew**

Started refereeing in 1951 in Leeds progressing with the Yorkshire League and the Central League before becoming a Football League Linesman in 1960 and a Football League Referee in 1966. Two of the more important matches he has officiated in were

in 1968 the Semi-Final of the F.A. Amateur Cup and in 1970 the Semi-Final of the F.A. Challenge Trophy. Mr. Kew, an insurance claims negotiator, is married with three children, two sons and a daughter. He is interested in classical music.

**Your team  
for Planned Savings**



**SAVINGS ACCOUNTS**

**GOVERNMENT  
STOCKS**

**SAVE AS YOU EARN  
SCHEME**

**T.S.B.  
UNIT TRUST**

**CHEQUE  
ACCOUNTS**

**LIFE ASSURANCE  
LINKED SAVINGS**

**CASH  
DISPENSER**

**CHEQUE  
CARDS**

**SERVICE**

**FOREIGN  
CURRENCY**

**STANDING  
ORDERS**

**Ask for details at your local T.S.B. Office**

**TRUSTEE SAVINGS BANK**

**93 Commercial Road, Swindon**

**Telephone 23949**

## DON ROGERS SPORTS

**29 FARINGDON ROAD SWINDON**

Telephone 27378

Main suppliers to Swindon Town Football Club

Stockists of

**All leading makes of Football Boots and Clothing  
Table Tennis, Badminton, Rugby and Hockey equipment**

**IN FACT THE COMPLETE SPORTS OUTFITTER**

## RIMES of SWINDON

POPULAR EXCURSION TO

Saturday, 19th Sept. **CARLISLE UNITED** Dept. Midnight Friday 

	Fare	
	adult	child
	46/6	31/-

SERVICE DIRECT TO THE GROUND  
ALL SEATS NUMBERED AND RESERVED

Book now at

**102 Commercial Rd., Swindon**      **46 Cricklade St., Cirencester**  
Telephone 27113      Telephone 3479

or with any of Rimes Booking Agents

*Dobell Shearman & Co. Ltd.*  
**HIGH STREET, OLD TOWN, SWINDON**

Telephone 4961

**FANCY and COMMERCIAL STATIONERS**  
**TYPEWRITERS and OFFICE EQUIPMENT**

Greetings Cards for all Occasions  
from Leading Art Publishers



## W. J. CASTLE

**Office and Bakery**

**4 and 5 MARKET STREET  
SWINDON**

Telephone 22017

Specialists—

BIRTHDAY CAKES - WEDDING CAKES

DAIRY CREAM - PASTRIES

BUNS - ROLLS - SPONGES





# Supporters club notes

The following items are available in the shop:

Swindon Rosettes 2s 3d  
Rosettes, various 2s 3d  
Swindon Pennants, old and new types 5s 0d  
Pennants, various 3s 6d  
World Cup 1970 2s 0d  
Car badges 19s 6d  
Car stickers 1s 0d  
Beatle hats 6s 0d  
Bobble hats 8s 6d  
Jockey hats 3s 6d  
Key rings, blue and white 2s 6d  
Pencils 3d  
Pens, red and white, engraved 9d  
Badges, various clubs 3s 6d  
Shoulder bags, League Cup 10s 0d  
Naples Cup Final programmes 1s 0d  
Programme Binders, to hold season's Programmes 8s 6d  
Items available shortly: ties, scarves, Supporters' Club badges for members and badges for non-members, Anglo-Italian Inter-League Cup winner's badge, English-Italian League Cup Competition winner's badge.

## **Proposed SUPPORTERS' CLUB ITALY TOUR 1971**

**for the away games in the  
Anglo-Italian Inter-League  
Cup Competition.**

**A tour of about 8 days is expected.**

**This will include the two away  
matches, with the periods before  
and between matches at a suitable  
seaside resort.**

To: The Hon. Gen. Secretary,  
Swindon Town Football  
Supporters' Club, Social Club,  
County Ground, Swindon.

Please allocate me a provisional place in the above Italian Tour, and advise me of all details when available.

I/we would not be able to make time available for the above tour, but would be interested if day flights, as for last season's Italian matches, are arranged. Please allocate me/us provisional seats for such a day flight.

(Delete whichever paragraph above does **not** apply, and complete the details. This alternative has been included at the request of a number of supporters who went on last season's flights.)

Name (Mr./Mrs./Miss):

(Block capitals please)

Address:

Tel. number (if any):

If more than one wishes to be recorded, please attach the above information on an additional sheet of paper.

**Note: Please enclose a stamped, addressed envelope for the further information, which should be available by the end of October.**

## **Soccer Who's Who Football Fans' Guide**

Answers all the questions football fans want to know. 92 club directory gives advance booking details, how to get there instructions, where to park details, ground facilities and entertainment, and potted history of every club. Obtainable from all newsagents, bookshops and club shops or 8/6 post free from Press Office, Football League, St. Annes, Lancs.

## HARRY LUNN

(Ex NOTTS COUNTY, PORTSMOUTH and SWINDON TOWN F.C.)

**Fish Bar and Restaurant**  
**27-28 COMMERCIAL ROAD SWINDON**

RESTAURANT open 9 a.m. to 10 p.m. for

**Snacks - Lunches - High Teas - Evening Meal**

FISH BAR open Mid-day and Evenings until 11 p.m.

## HULFORD MOTORS LIMITED

**SELF DRIVE HIRE**

Fleet of 1970/69 Fords Escorts De-Luxe  
Cortinas De-Luxe Cortinas 1600 Estate  
(Bench Seat Column Change) — Zephyr V4s

**SHRIVENHAM ROAD**

(200 yards from Football Ground)

**Telephone 4934**

Large Car Park Available

## COWLEY BROS. (Wroughton) LTD.

**BUILDERS OF MODERN ATTRACTIVE  
HOUSES and BUNGALOWS**

Developments at

**SWINDON**

**WROUGHTON**

**BADBURY**

Office

**28 NEWPORT STREET  
SWINDON**

Telephone Swindon 6870

Reserved for British Rail



**Inter-City**

# Golden Goal Competition

Tickets bearing the time in minutes and seconds will be on sale before the game – price **one shilling**  
The ticket with the exact time when the **FIRST GOAL** is scored will win

**£60**

The ticket bearing the time when the **LAST GOAL** is scored will win

**£10**

The official announcer will be the timekeeper and he will announce the official time of both goals. Should only one goal be scored the winning ticket holder will receive £70. In the event of no goals tickets bearing no score will win £10

A further prize of **£10** will also be given for the ticket bearing the number corresponding to the official attendance at the match  
Be sure to get your ticket –  
Watch for the  
**GOLDEN GOAL GIRLS!**

## GOLDEN GOAL WINNERS

### Hull City (16th August, 1970)

1st goal £60 – Mr. Drewitt, 2 Croft Road, Rushall, Pewsey.

Last goal £10 – H. Owens, 28 Swindon Road, Stratton.

Attendance £10 – E. Pinnegar, 27 Avebury Road, Swindon.

### Sunderland (29th August, 1970)

1st goal £60 – Mr. L. J. Page, 375 Penhill Drive, Swindon.

Last goal £10 – S. G. Hicks, 22 High Street, Upavon, Pewsey.

Attendance £10 – S. Young, 10 Haze Grove, Trowbridge.

### Watford (1st September, 1970)

1st Goal £60 – Miss E. Hutchings, Eastridge, Ramsbury.

Last goal £10 – T. Jackson, The Gwen Stone Lane, Lydiard.

Attendance £10 – Mr. N. Blackmore, 58 Penhill Drive, Swindon.

---

## Forthcoming matches

**TUESDAY, 15th SEPTEMBER, 1970**

Football Combination – Kick-off 7.30 p.m.

### Swindon Town v. Cardiff City

**SATURDAY, 19th SEPTEMBER, 1970**

Football Combination – Kick-off 3 p.m.

### Swindon Town v. Bristol Rovers

---

# Portsmouth Football Club

The Portsmouth Football Club was formed as a Limited Company in 1898 and commenced playing at Fratton Park, which was purchased for £5,000, in 1899/90 season in the Southern League.

The original Board of Directors were Messrs. John Brickwood, G. Lewis-Oliver, O. W. Peters, A. Bone and W. Wiggington.

Pompey took over the place vacated by the erring Royal Artillery in the first division of the Southern League for 1899/90.

In 1901/02 the club won the Southern League Championship by five points from local rivals Southampton, and reached the quarter-finals of the F.A. Cup before going down to Derby County in a replay.

Portsmouth won the Southern League title for the second time in 1920 when the entire first division of that competition was taken over by the Football League to form the new Third Division.

Portsmouth remained unbeaten on their debut in each of the big competitions and only once conceded goals:

## **F.A. Cup**

1899/90 – Blackburn 0, Pompey 0.

## **Football League**

Division III: August 28th, 1920

Pompey 3, Swansea 0.

Division II: August 30th, 1924

South Shields 0, Pompey 2.

Division I: August 27th, 1927

Sunderland 3, Pompey 3.

## **Football League Cup**

November 2nd, 1960

Pompey 2, Coventry 0.

No one has ever beaten

Portsmouth's rise from non-League football to Division I in seven seasons (1920/27) since the formation of Division III.

Pompey qualified for promotion to

the First Division in 1926/27 after a thrilling race with Manchester City by a minute goal margin.

Portsmouth scored 1.77551 goals against each goal conceded. The City's figures being 1.77049.

The club's record in winning the Football League Championship in 1949 in its twenty-second season in the competition, after starting in Division III, remained intact until Ipswich achieved the feat in seventeen seasons (1962).

An unbroken run of twenty-five seasons in Division I between 1927 and 1959 has been bettered by only nine clubs in the game's history: Sunderland (fifty-seven), Aston Villa (forty-four), Blackburn (forty-four), Arsenal (forty-one and still going strong), Newcastle (thirty-two), Everton (thirty-eight), Liverpool (thirty-eight), Sheffield United (thirty-seven) and Wolves (twenty-six).

A double golden jubilee celebration took place in 1949. In the Football League's fiftieth season Portsmouth won the championship in the club's fiftieth year.

That same year Pompey took part in the F.A. Charity Shield match for the only time and, in drawing 1—1 with Cup-winners Wolves, provided the first case on record of that trophy being shared and retained by each club for six months.

Portsmouth became only the sixth club to take the League Championship in successive seasons (apart from hat-tricks recorded by Huddersfield and Arsenal) when they finished ahead of Wolves on goal average in 1950. It has since been achieved only by Manchester United 1956 and 1957, and Wolverhampton Wanderers 1958 and 1959.

Suppliers to the Swindon Team  
**MAY WE SUPPLY YOU?**



**EARLE**

of Chippenham Limited

MAIN

**FORD**

DEALERS

**COCKLEBURY ROAD CHIPPENHAM**

Telephone 3255

**H. HIBBERD LIMITED**

**FOR YOUR EARTH-MOVING EQUIPMENT**

*Plant Hire Contractors*



**40 NEWPORT STREET SWINDON**

Telephone Swindon 6125

# **follow the robins . . .**

## **to Carlisle United**

### **Saturday 19th September**



Leave Swindon by A345 to Stratton and at junction take A419 to Cirencester. Leave Cirencester by A417 and at junction take A435 to **Cheltenham**

**31½ miles**

Take A4019 from Cheltenham and at junction A38 through Tewkesbury until M50 Motorway, 1½ miles on join M5 and continue to 'End of Motorway' then take A456 via Quinton to junction with A4123 to Warley and **Wolverhampton**.

**90¾ miles**

Leave Wolverhampton by A449 continue to junction with A5 then to Gailey Roundabout and take 3rd road off for M6 Motorway. Continue until End of Motorway then join **A6**. **214 miles**

Follow A6 via Kendal, High Borrow Bridge and Shap to M6 Motorway, follow to End of Motorway then rejoin A6. The A6 continues via Plumpton Wall, High Hesket and Carleton into London Road, turn right into Rydal Street and straight on into Broad Street at end of which turn right into Warwick Road, **Carlisle**. **273¾ miles**

**Route kindly supplied by R.A.C.**

#### **Admission Prices at Carlisle**

Ground 6/- (O.A.P's and 14 and under 3/-). Paddock 7/-. Grandstand 'A' 10/- (14 and under 5/-). Grandstand 'B' and 'D' 12/-. Grandstand 'C' 14/-. Grandstand seats available two weeks in advance. Postal applications must include s.a.e. and addressed to The Secretary at the Club address.

International Football League Match

## **THE FOOTBALL LEAGUE v. THE IRISH FOOTBALL LEAGUE**

**to be played at Norwich on**

**Wednesday, 23rd September, 1970, kick-off 7.30 p.m.**

Tickets in advance are obtainable from The Secretary, Norwich City Football Club Limited, Carrow Road, Norwich NOR22T as follows:

Stand – 15/-, 10/-, 9/-

Enclosed seating – 11/- and 9/-

Admission to the ground (6/- and 6/6; Boys and Old Age Pensioners 3/-) will be by cash at the turnstiles

Applications for tickets clearly marked "Football League" in the bottom left-hand corner and must be accompanied by remittance and stamped addressed envelope for return of tickets.

---

# AKERS GARAGE LIMITED

THE STREET MOREDON SWINDON WILTSHIRE

Telephone Swindon 3457/8

main dealer for  
**VAUXHALL/BEDFORD**  
and  
Parts and Accessories  
Sales and Service

Showrooms open  
MONDAY to FRIDAY — 8 a.m. to 8 p.m.

SATURDAY — Closed 7 p.m.

SUNDAYS — 10 a.m. to 2 p.m. for Petrol and Viewing

---

---

## For a home win fill in this coupon NOW!

I am interested in a home on the Nythe Estate.   
Greenmeadow Estate.  Eldene Estate.

NAME \_\_\_\_\_

ADDRESS \_\_\_\_\_  
\_\_\_\_\_

We are currently building the three Swindon developments indicated on the coupon, together with other housing projects in the counties of Somerset and Dorset.

**BRADLEY ESTATES**

74 VICTORIA ROAD SWINDON

Tel: 5865



## **spectator seating in high density polyethylene**

- \* Supplied to over 40 Football League clubs
- \* Any colour. No maintenance
- \* Industrial seats for the food, electronics and pharmaceutical industries
- \* Largest supplier of spectator and industrial seating in Europe
- \* Heavy, medium and light steel fabrication
- \* Custom made production line equipment
- \* Ancillary work for industry and the building trade

FAST EFFICIENT SERVICE BY



**MARTYN LYNSHAW LTD**

**BOUNDARY WORKS - STRATTON ROAD - SWINDON - WILTS**

Telephone: 24231